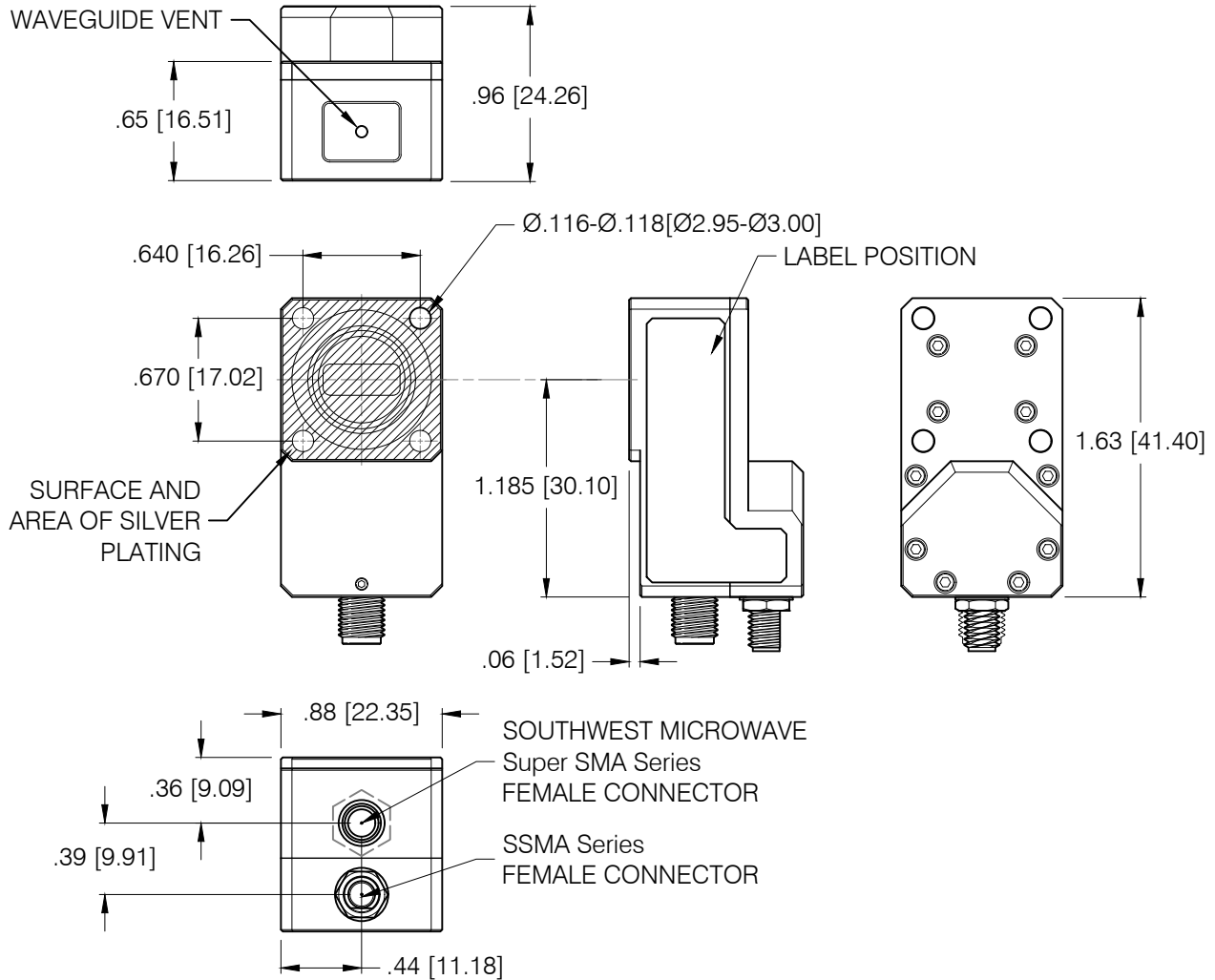


DASH NO.	APPLICATION		REVISIONS			
	NEXT ASSY	USED ON	LTR	DESCRIPTION	DATE	APPROVED
			A	INITIAL RELEASE	02/19/19	rs

PRINT NOT ON AUTOMATIC DISTRIBUTION VERIFY REVISION PRIOR TO USE



THESE ITEM(S)/TECHNOLOGY CONTAIN INFORMATION SUBJECT TO U.S. GOVERNMENT EXPORT CONTROL IN ACCORDANCE WITH THE EXPORT ADMINISTRATION REGULATIONS (EAR), 15 CFR PARTS 730-744. EXPORT OF THIS DATA TO ANY FOREIGN COUNTRY OR DISCLOSURE OF THIS DATA TO ANY NON-US PERSON MAY BE A VIOLATION OF FEDERAL LAW.

**Narda-MITEQ PROPRIETARY**

THIS DOCUMENT CONTAINS INFORMATION WHICH IS PROPRIETARY TO Narda-MITEQ. THE CONTENTS SHALL NOT BE DISCLOSED, COPIED, DISTRIBUTED, OR USED UNLESS AUTHORIZED BY AN OFFICER OF Narda-MITEQ.

**NOTES:**

1. DIMENSIONS IN BRACKETS ARE METRIC EQUIVALENT
2. MATERIAL & FINISH: ALUMINUM WITH TRIVALENT CHROMATE CONVERSION

UNLESS OTHERWISE SPECIFIED DIMENSIONS ARE IN INCHES TOLERANCES ON	NAME	DATE
	DWN <i>JB</i>	05/29/18
	DFT DES <i>rs</i>	04/03/19
	PROJ ENGR <i>Joseph Buonaiuto</i>	02/19/19
	MFG ENGR	
PROJECTION	Q.C.	
ESD SENSITIVE	CUST	



435 MORELAND RD HAUPPAUGE, NY 11788

**Ka BAND WAVEGUIDE LNA OUTLINE  
RIGHT ANGLE WR42/CUSTOM  
CHOKE FLANGE VENTED**

SIZE <b>A</b>	CODE IDENT. NO. <b>99899</b>	<b>219115</b>	REV <b>A</b>
SCALE	PROJECT	SHEET 1 OF 1	1