

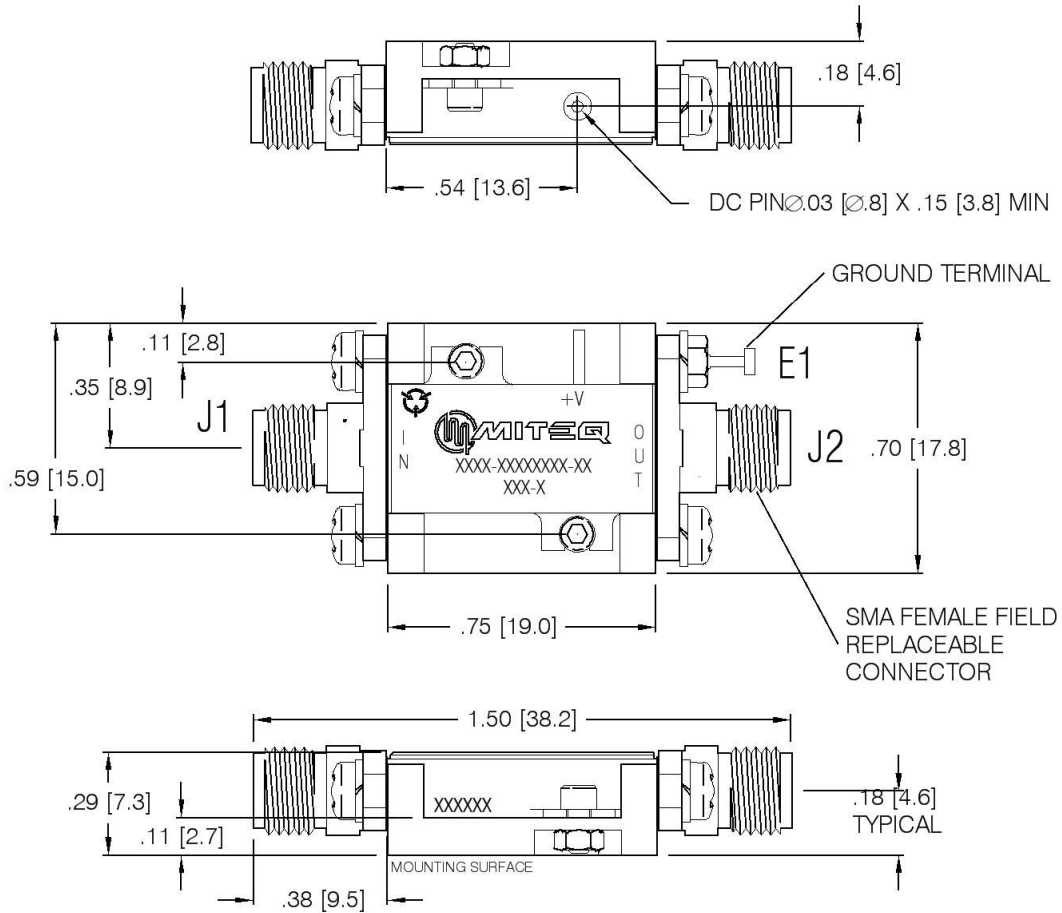
Current Revision

As of 7/23/2015 9:24:57 AM

DWALATA



DASH NO.	APPLICATION		REVISIONS			
	NEXT ASSY	USED ON	LTR	DESCRIPTION	DATE	APPROVED
	115148		A	INITIAL RELEASE	07/16/15	<i>R.Scherer</i>



UNLESS OTHERWISE SPECIFIED DIMENSIONS ARE IN INCHES [mm] TOLERANCES ON DECIMAL .X \pm 0.1 [2.5] DECIMAL .XX \pm 0.01 [0.25] DECIMAL .XXX \pm 0.005 [0.13] ANGLES X° \pm 30'	NAME	DATE	100 Davids Drive, Hauppauge, New York 11788		
	DWN <i>R.Scherer</i>	07/16/15			
	DFT DGN <i>R.Scherer</i>	07/16/15	AFS5 SERIES AMPLIFIER OUTLINE		
	PROJ ENGR <i>N. Shaikh</i>	07/22/15			
ESD SENSITIVE	MFG ENGR		SIZE	CODE IDENT. NO.	REV
	Q.C.		A	33592	A
	CUST		SCALE	PROJECT	SHEET OF 1