

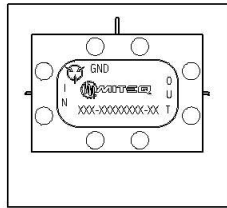
Current Revision

As of 8/6/2014 11:41:05 AM

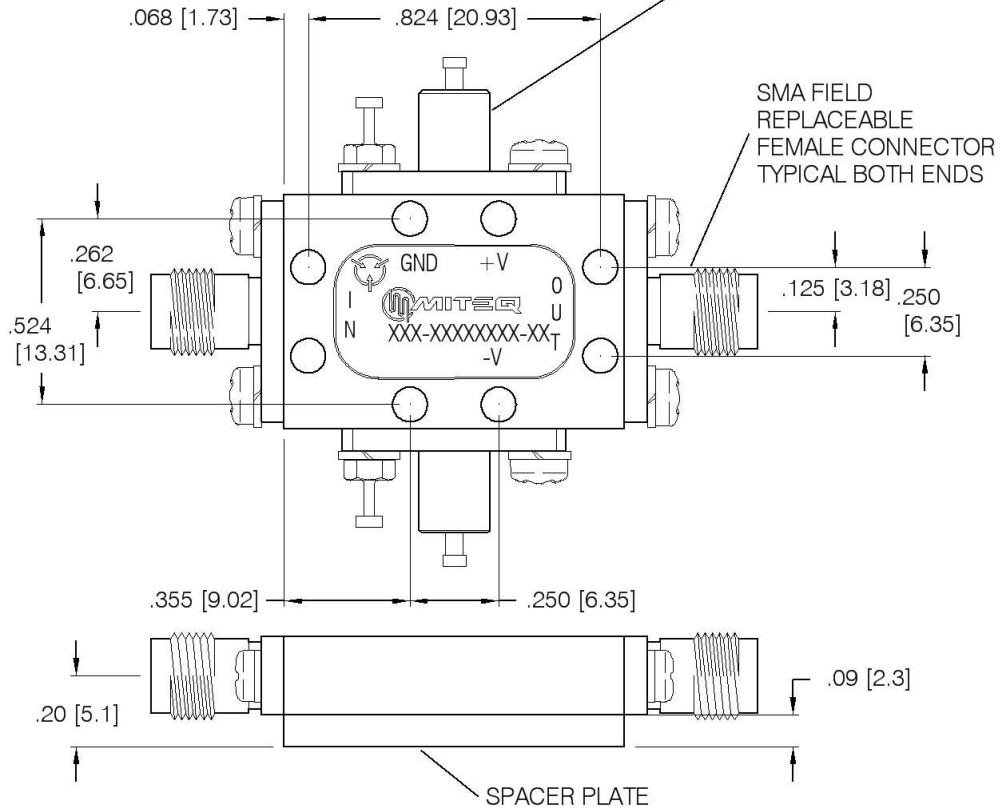
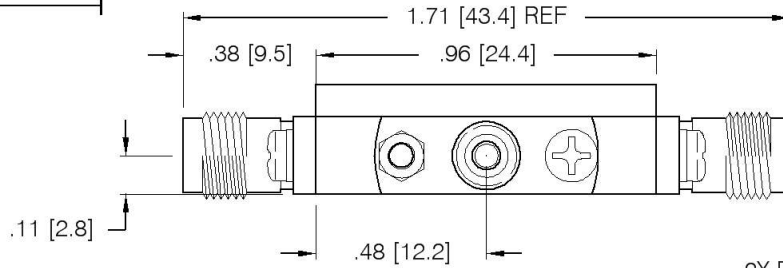
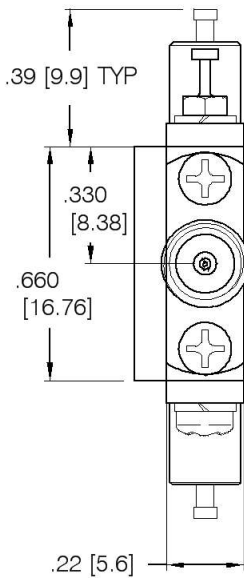
DWALATA



DASH NO.	APPLICATION		REVISIONS			
	NEXT ASSY	USED ON	LTR	DESCRIPTION	DATE	APPROVED
	HSG	152358	A	INITIAL RELEASE	08/06/14	J.Boivard



ACTUAL SIZE WITH CONNECTORS REMOVED



NOTES:

1. DIMENSIONS IN BRACKETS ARE METRIC EQUIVALENTS
2. DC PIN IS $\varnothing 0.015$ [0.38] X $.08$ [2.0], RF PINS ARE $\varnothing 0.012$ [0.30] X $.06$ [1.4] LONG
3. HOUSING MADE OF KOVAR, FINISH GOLD ON NICKEL, SPACER PLATE MADE OF ALUMINUM ALLOY

UNLESS OTHERWISE SPECIFIED DIMENSIONS ARE IN INCHES TOLERANCES ON	NAME	DATE	NON ITAR CONTROLLED 100 Davids Drive, Hauppauge, New York 11788				
	DWN BY	B.Worster				07/30/14	
DECIMAL .XX ±.01 DECIMAL .XXX ±.005 ANGLES X° ±30'	CHK BY	J.Boivard	08/06/14	LCA SERIES DUAL PIN AMPLIFIER OUTLINE			
	PROJ ENGR	B.Worster	08/06/14				
SECT HEAD	J. Terveen	08/06/14					
Q.C.				SIZE	CODE IDENT. NO.		REV
				A	33592	212083	A
CUST				SCALE	PROJECT	SHEET	DF 1