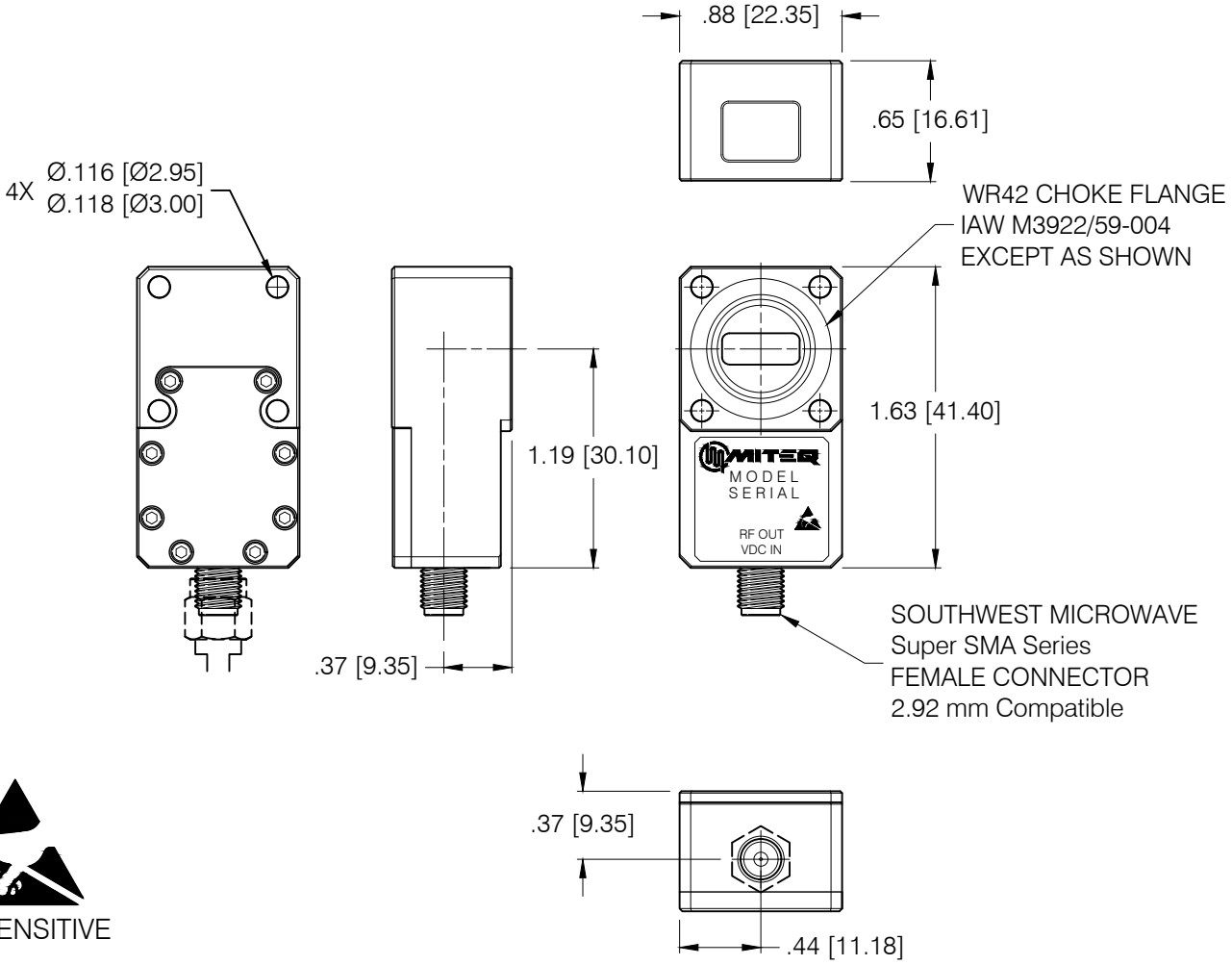


DASH NO.	APPLICATION		REVISIONS			
	NEXT ASSY	USED ON	LTR	DESCRIPTION	DATE	APPROVED
			B	Incorporated ECN 50221	01/12/20	rs
PRINT NOT ON AUTOMATIC DISTRIBUTION VERIFY REVISION PRIOR TO USE						



THESE ITEM(S)/TECHNOLOGY CONTAIN INFORMATION SUBJECT TO U.S. GOVERNMENT EXPORT CONTROL IN ACCORDANCE WITH THE EXPORT ADMINISTRATION REGULATIONS (EAR), 15 CFR PARTS 730-744. EXPORT OF THIS DATA TO ANY FOREIGN COUNTRY OR DISCLOSURE OF THIS DATA TO ANY NON-US PERSON MAY BE A VIOLATION OF FEDERAL LAW.

Narda-MITEQ PROPRIETARY
THIS DOCUMENT CONTAINS INFORMATION WHICH IS PROPRIETARY TO Narda-MITEQ. THE CONTENTS SHALL NOT BE DISCLOSED, COPIED, DISTRIBUTED, OR USED UNLESS AUTHORIZED BY AN OFFICER OF Narda-MITEQ.

- NOTES:
1. DIMENSIONS IN BRACKETS ARE METRIC EQUIVALENT.
 2. MATERIAL & FINISH: ALUMINUM WITH TRIVALENT CHROMATE CONVERSION.
 3. ESTIMATED WIEGHT 38 GRAMS

UNLESS OTHERWISE SPECIFIED DIMENSIONS ARE IN INCHES TOLERANCES ON	NAME	DATE
DECIMAL .X ±0.1 [2.5] DECIMAL .XX ±0.01 [0.25] DECIMAL .XXX ±0.005 [0.13] ANGLES X° ±30'	DWN <i>FS</i>	06/19/13
	DFT DES <i>rs</i>	01/13/20
	PROJ ENGR <i>Joseph Buonaiuto</i>	01/14/20
PROJECTION	MFG ENGR	
	Q.C. <i>R. Zalewski</i>	01/13/20
	CUST	



**K BAND WAVEGUIDE LNA
RIGHT ANGLE WR42/CHOKE FLANGE
THRU HOLE BTO OUTLINE**

SIZE A	CODE IDENT. NO. 99899	208883	REV B
SCALE	PROJECT	SHEET 1 OF 1	1