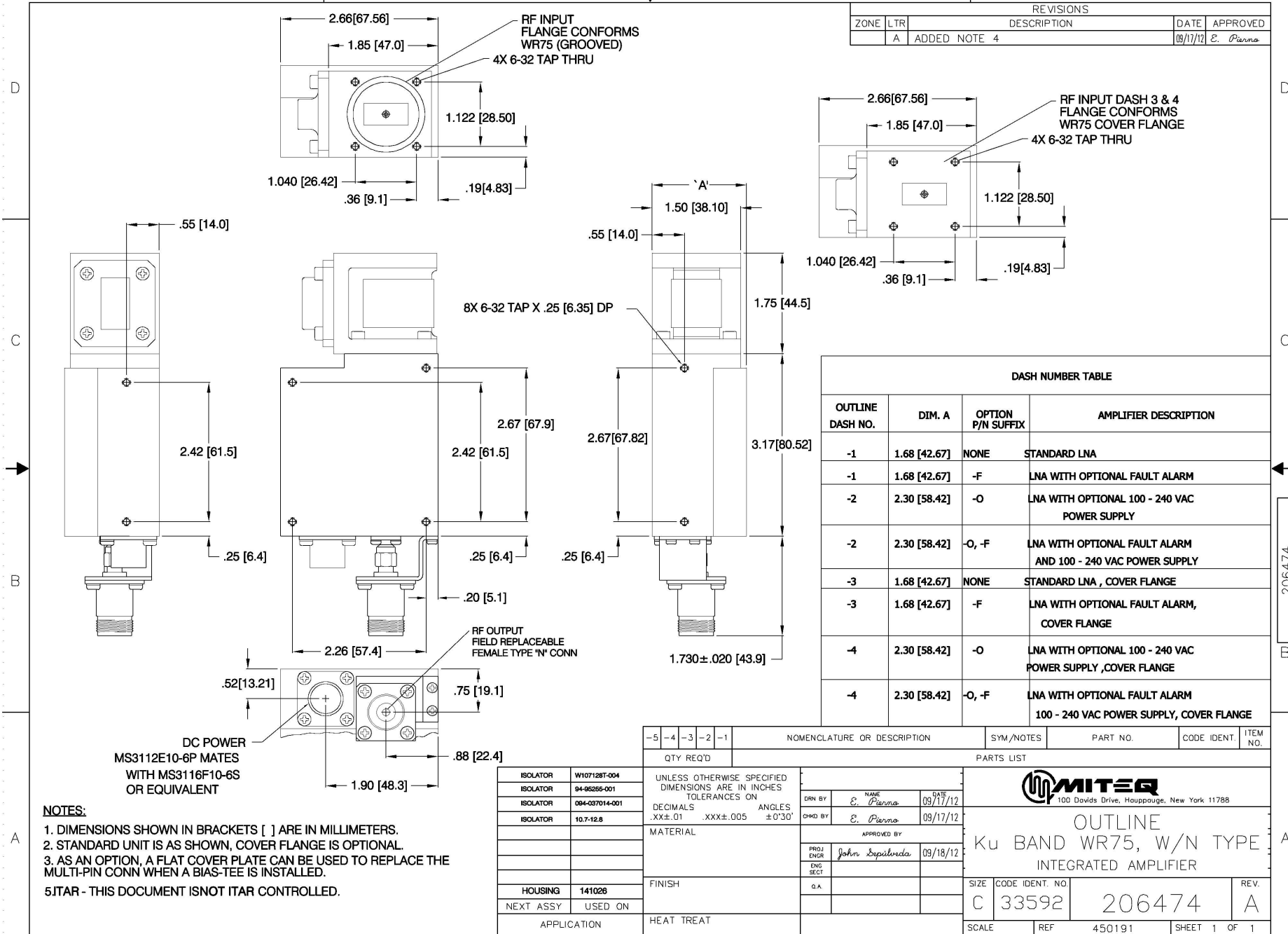


REVISIONS				
ZONE	LTR	DESCRIPTION	DATE	APPROVED
A		ADDED NOTE 4	09/17/12	E. Piarra



DASH NUMBER TABLE			
OUTLINE DASH NO.	DIM. A	OPTION P/N SUFFIX	AMPLIFIER DESCRIPTION
-1	1.68 [42.67]	NONE	STANDARD LNA
-1	1.68 [42.67]	-F	LNA WITH OPTIONAL FAULT ALARM
-2	2.30 [58.42]	-O	LNA WITH OPTIONAL 100 - 240 VAC POWER SUPPLY
-2	2.30 [58.42]	-O, -F	LNA WITH OPTIONAL FAULT ALARM AND 100 - 240 VAC POWER SUPPLY
-3	1.68 [42.67]	NONE	STANDARD LNA , COVER FLANGE
-3	1.68 [42.67]	-F	LNA WITH OPTIONAL FAULT ALARM, COVER FLANGE
-4	2.30 [58.42]	-O	LNA WITH OPTIONAL 100 - 240 VAC POWER SUPPLY ,COVER FLANGE
-4	2.30 [58.42]	-O, -F	LNA WITH OPTIONAL FAULT ALARM 100 - 240 VAC POWER SUPPLY, COVER FLANGE

QTY REQ'D		NOMENCLATURE OR DESCRIPTION	SYM/NOTES	PART NO.	CODE IDENT.	ITEM NO.
-5	-4	-3	-2	-1	PARTS LIST	

ISOLATOR	W1071287-004	UNLESS OTHERWISE SPECIFIED DIMENSIONS ARE IN INCHES TOLERANCES ON DECIMALS .XX±.01 ANGLES .XXX±.005 ±0°30'	DRN BY	E. Piarra	DATE	09/17/12
ISOLATOR	94-95265-001		CHKD BY	E. Piarra	DATE	09/17/12
ISOLATOR	094-037014-001		APPROVED BY			
ISOLATOR	10.7-12.8		PROJ ENGR	John Sepulveda	DATE	09/18/12
FINISH		MATERIAL		ENG SECT		
HEAT TREAT		APPLICATION USED ON		G.A.		

MITEQ		100 Davids Drive, Houppauge, New York 11788	
OUTLINE Ku BAND WR75, W/N TYPE INTEGRATED AMPLIFIER			
SIZE	CODE IDENT. NO.	REV.	
C	33592	206474	A
SCALE	REF	450191	SHEET 1 OF 1

NOTES:

1. DIMENSIONS SHOWN IN BRACKETS [] ARE IN MILLIMETERS.
 2. STANDARD UNIT IS AS SHOWN, COVER FLANGE IS OPTIONAL.
 3. AS AN OPTION, A FLAT COVER PLATE CAN BE USED TO REPLACE THE MULTI-PIN CONN WHEN A BIAS-TEE IS INSTALLED.
- 5J1AR - THIS DOCUMENT IS NOT ITAR CONTROLLED.