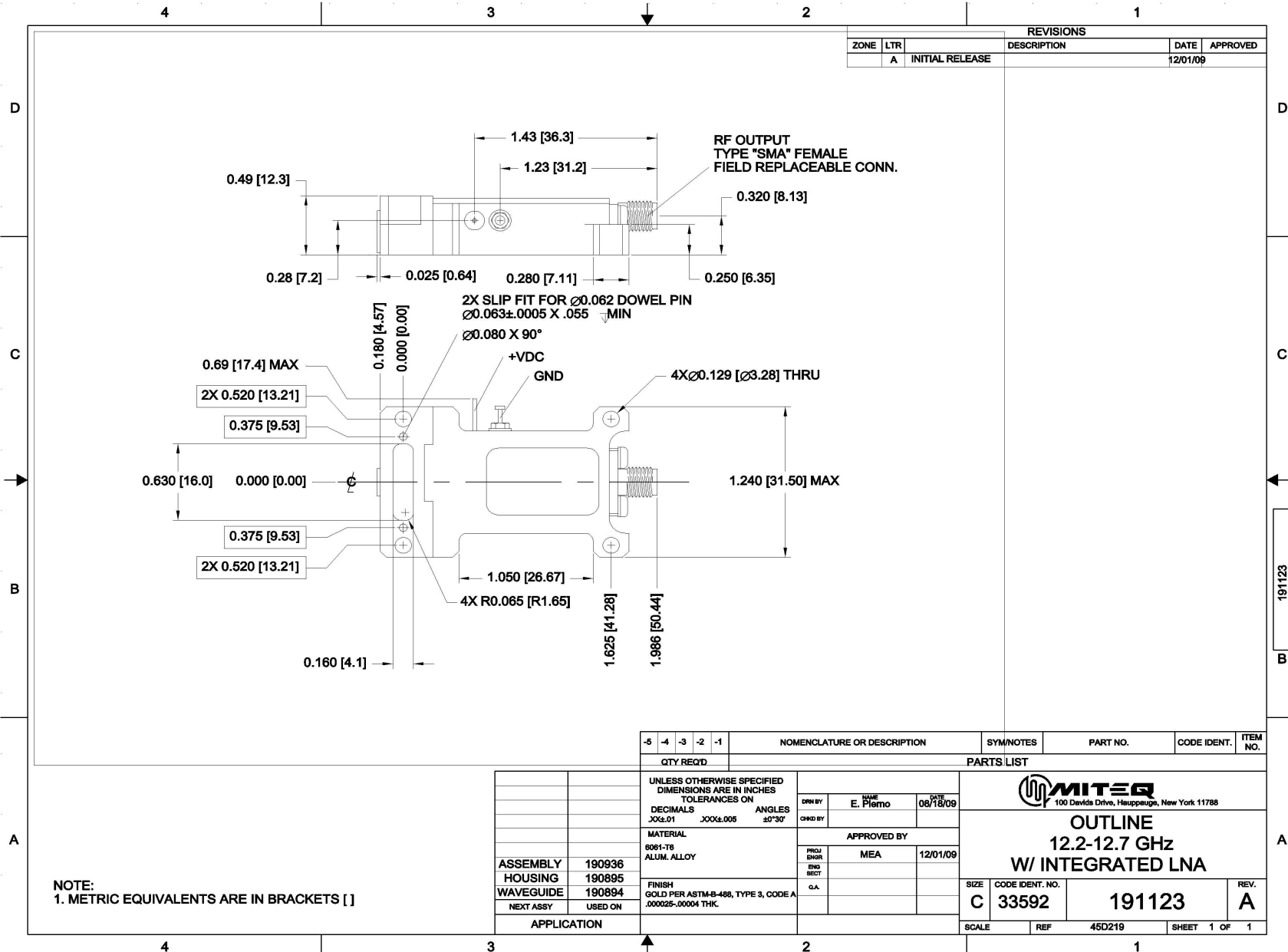


# Current Revision

As of 12/3/2009 9:47:02 AM

DWALATA



ZONE		LTR	DESCRIPTION	DATE	APPROVED
A			INITIAL RELEASE	12/01/09	

-5	-4	-3	-2	-1	NOMENCLATURE OR DESCRIPTION	SYM/NOTES	PART NO.	CODE IDENT.	ITEM NO.
QTY REQ'D					PARTS LIST				

UNLESS OTHERWISE SPECIFIED DIMENSIONS ARE IN INCHES TOLERANCES ON			DRN BY	NAME	DATE
DECIMALS	ANGLES		E. Pletto		08/18/09
XX±.01	XXX±.005	±0°30'	CHKD BY		
MATERIAL			APPROVED BY		
8061-T8 ALUM. ALLOY			PREP	MEA	12/01/09
FINISH			ENG		
GOLD PER ASTM-B-488, TYPE 3, CODE A .000025-.00004 THK.			QA		

**MITEQ**  
100 Davids Drive, Hauppauge, New York 11788

**OUTLINE**  
12.2-12.7 GHz  
W/ INTEGRATED LNA

SIZE	CODE IDENT. NO.	REV.
C	33592	A

SCALE REF 45D219 SHEET 1 OF 1

NOTE:  
1. METRIC EQUIVALENTS ARE IN BRACKETS [ ]

ASSEMBLY	HOUSING	WAVEGUIDE	NEXT ASSY	USED ON
190936	190895	190894		