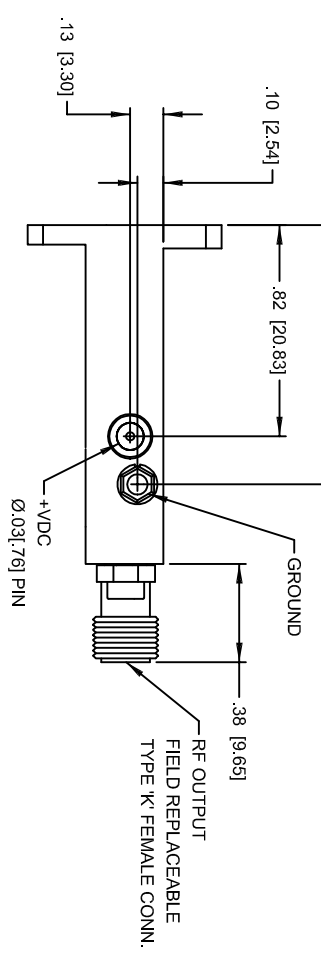
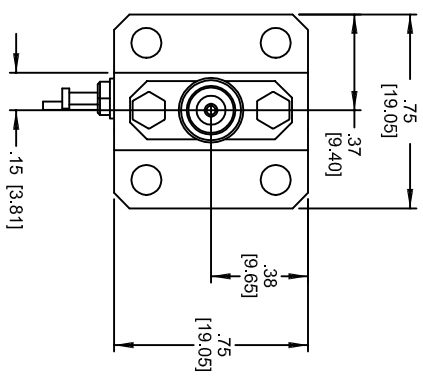
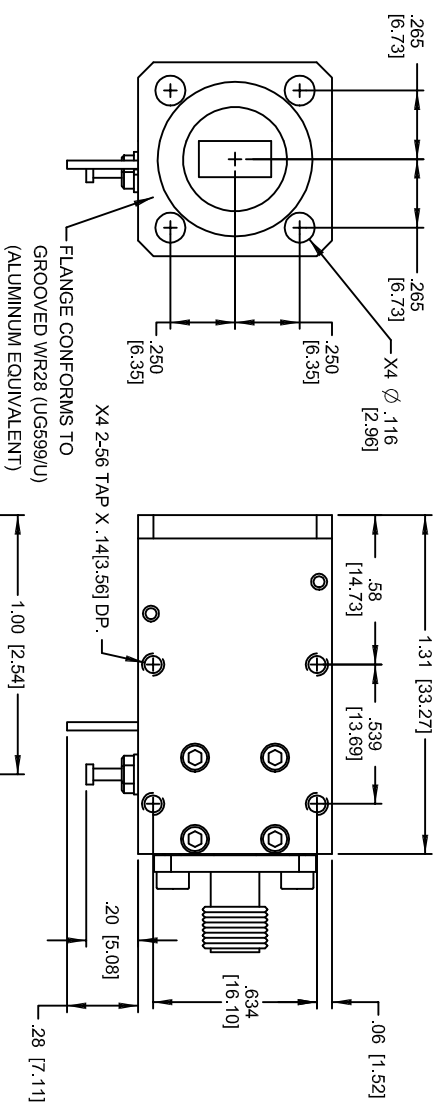
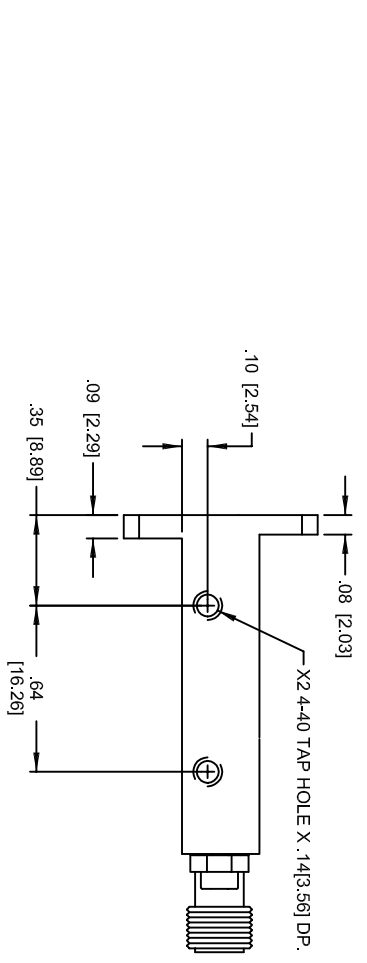


REVISIONS			
ZONE	LTR	DESCRIPTION	DATE
A	INITIAL RELEASE		1/11/2007
			APPROVED
			<i>Eytzhandy</i>



NOTE:
 1. METRIC EQUIVALENT ARE IN PARENTHESIS.
 2. INPUT AND OUTPUT CAN BE REVERSED AS SHOWN.

QTY	REQ'D	-5	-4	-3	-2	-1	NOMENCLATURE OR DESCRIPTION	SYM/NOTES	PART NO.	CODE IDENT.	ITEM NO.
UNLESS OTHERWISE SPECIFIED DIMENSIONS ARE IN INCHES DECIMALS .XXX±.005 ANGLES ±0.30 MATERIAL							DIN BY <i>Eytzhandy</i> DATE 1/11/2007		APPROVED BY <i>p. Decker</i> DATE 1/11/2007		
MATERIAL							CWR2		173718		
FINISH							CWR1		173717		
HEAT TREAT							HOUSING		173715		
APPLICATION							NEXT ASSY		USED ON		
SCALE							REF		SHEET 1 OF 1		
OUTLINE, WR28 WAVEGUIDE W/INTERGRATED AMPLIFIER (26.5-40.0 GHz)							SIZE CODE IDENT. NO.		33592 173839		
100 Davids Drive, Hempstead, New York 11788							REV.		A		