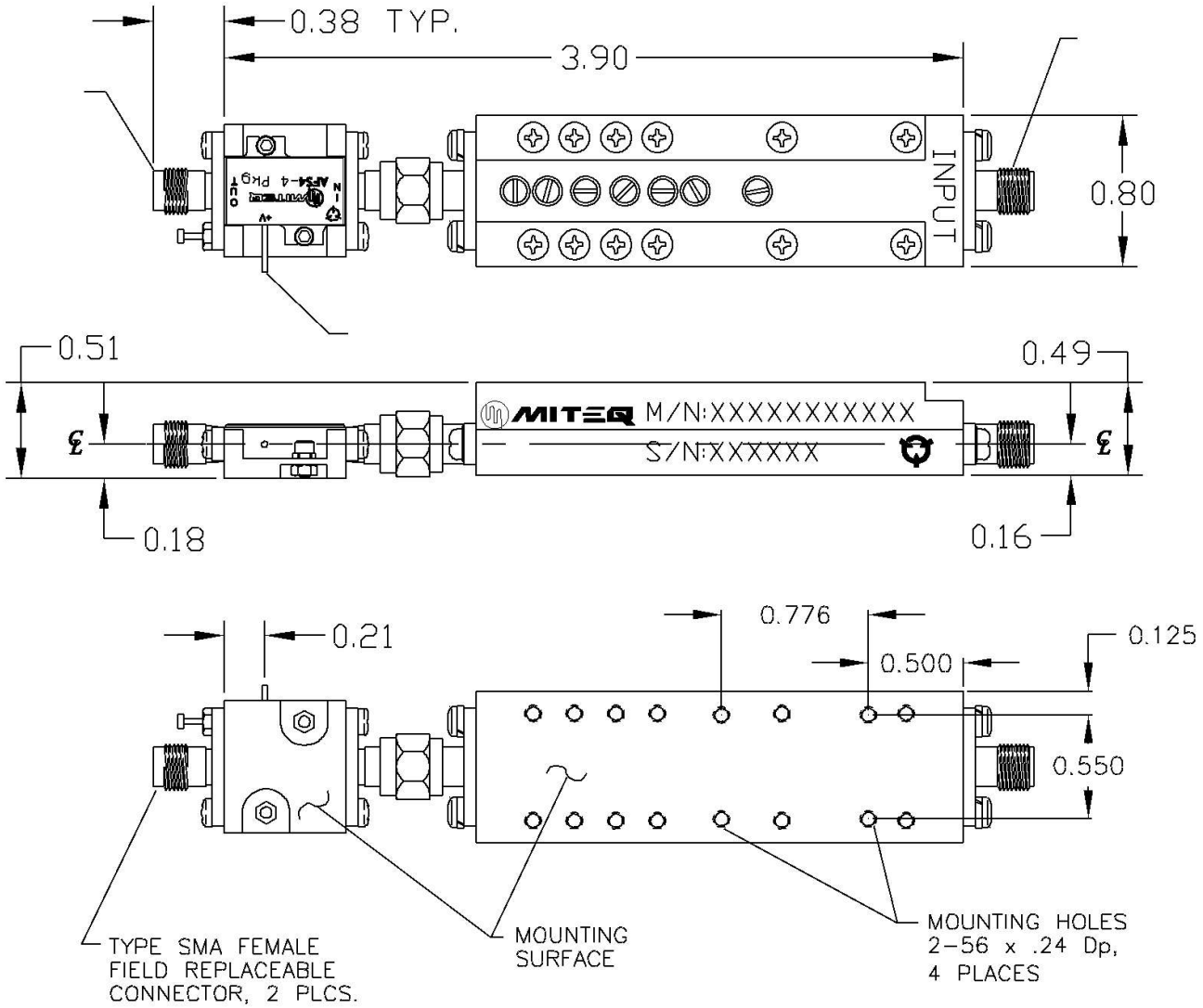


DASH NO.	APPLICATION		REVISIONS			
	NEXT ASSY	USED ON	LTR	DESCRIPTION	DATE	APPROVED
			A	INITIAL RELEASE	7/12/2004	L. Cardinal



FINISH:

PART 'A' MOUNTING SURFACE-CHEMICAL FILM per MIL-C-5541C, CL3

PART 'B' MOUNTING SURFACE-SILVER PLATE PER QQ-S-365, TYPE 2, GRADE A

ALL PAGES ARE OF ORIGINAL ISSUE (A) EXCEPT AS NOTED.	CONTR NO.	MQ0154196	 100 Davids Drive, Hauppauge, New York 11788		
	PREP BY	L. Cardinal		DATE	7/12/2004
UNLESS OTHERWISE SPECIFIED DIMENSIONS ARE IN INCHES (MM) TOLERANCES ON DECIMAL ANGLES .XX±.01 XXX±.005 ±0°30'	CHKD BY	L. Cardinal	DATE	2/13/2007	
	PROJ ENGR	B. Jang	DATE	2/14/2007	
	APPROVAL (PROJ)		SIZE	A	
APPROVAL (GOVT)		CODE IDENT. NO.	33592	157973	
		SCALE	REV.	A	SHEET 1 OF 1