

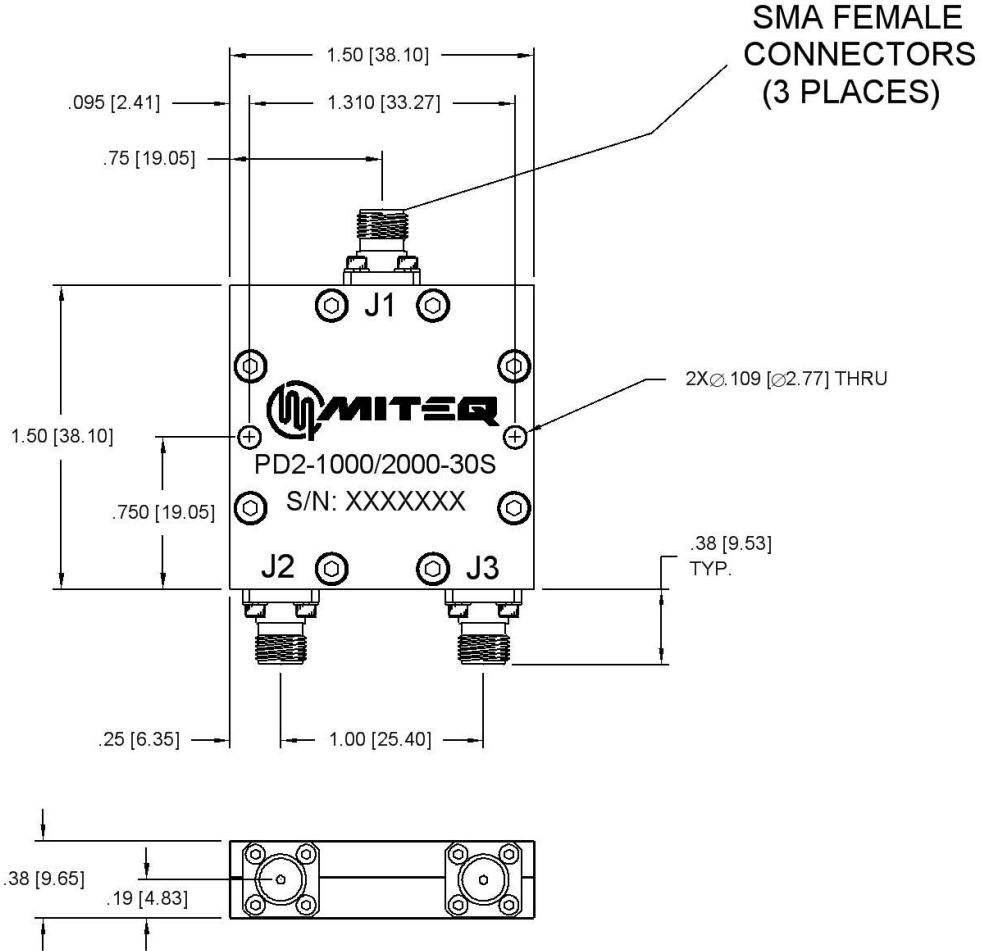
Current Revision

As of 4/20/2011 9:29:06 AM

DWALATA



DASH NO.	APPLICATION		REVISIONS			
	NEXT ASSY	USED ON	LTR	DESCRIPTION	DATE	APPROVED
			E	Incorporated ECN 19526	04/13/11	<i>J. Campisi</i>



NOTES:

1. MATERIAL: ALUMINUM ALLOY 6061-T6
2. FINISH: TRIVALENT CHROMATE CONVERSION IAW: MIL-DTL-5541, TYPE 2, CLASS 3.

ALL PAGES ARE OF ORIGINAL ISSUE (A) EXCEPT AS NOTED.	CONTR NO. 38POD77		 100 Davids Drive, Hauppauge, New York 11788	
	PREP BY <i>W. Hurst</i>	DATE 07/28/03		
UNLESS OTHERWISE SPECIFIED DIMENSIONS ARE IN INCHES TOLERANCES ON DECIMALS .XX±.01 .XXX±.005 ANGLES ±0°30'	CHKD BY <i>J. Campisi</i>	DATE 04/19/11	OUTLINE DRAWING 2-WAY POWER DIVIDER PD2-1000/2000-30S	
	PROJ ENGR <i>W. Davidsson</i>	DATE 04/19/11		
	APPROVAL (PROJ)		SIZE A	CODE IDENT. NO. 33592
	APPROVAL (GOVT)		SCALE	REV. E
		SHEET dF 1		