

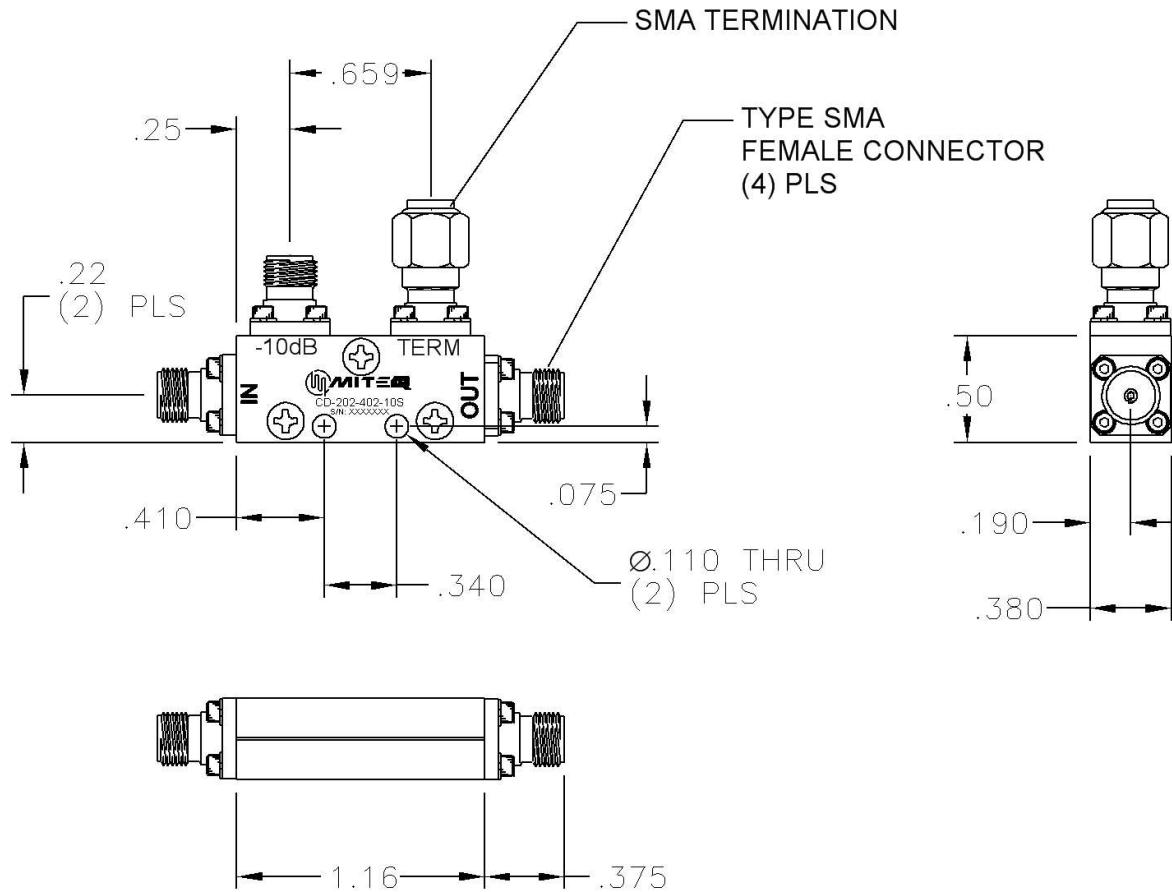
Current Revision

As of 1/18/2011 2:17:32 PM

DWALATA



DASH NO.	APPLICATION		REVISIONS			
	NEXT ASSY	USED ON	LTR	DESCRIPTION	DATE	APPROVED
			C	Incorporated ECN 18645	01/11/11	<i>J. Campisi</i>



NOTES:

1. MATERIAL: ALUMINUM ALLOY 6061-T6.
2. FINISH: TRIVALENT CHROMATE CONVERSION IAW MIL-DTL-5541F, TYPE II, CLASS 3.

ALL PAGES ARE OF ORIGINAL ISSUE (A) EXCEPT AS NOTED.	CONTR NO. 12D091		 100 Davids Drive, Hauppauge, New York 11788	
	PREP BY <i>B. HURST</i>	DATE 04/24/02		
UNLESS OTHERWISE SPECIFIED DIMENSIONS ARE IN INCHES TOLERANCES ON DECIMALS .XX±.01 ANGLES ±0°30'	CHKD BY <i>J. Campisi</i>	DATE 01/14/11	OUTLINE DRAWING DIRECTIONAL COUPLER CD-202-402-10S	
	PROJ ENGR <i>W. Davidsson</i>	DATE 01/18/11		
	MFG ENGR		SIZE A	CODE IDENT. NO. 33592
	Q.A.		SCALE	REV. C
		SHEET OF 1		