

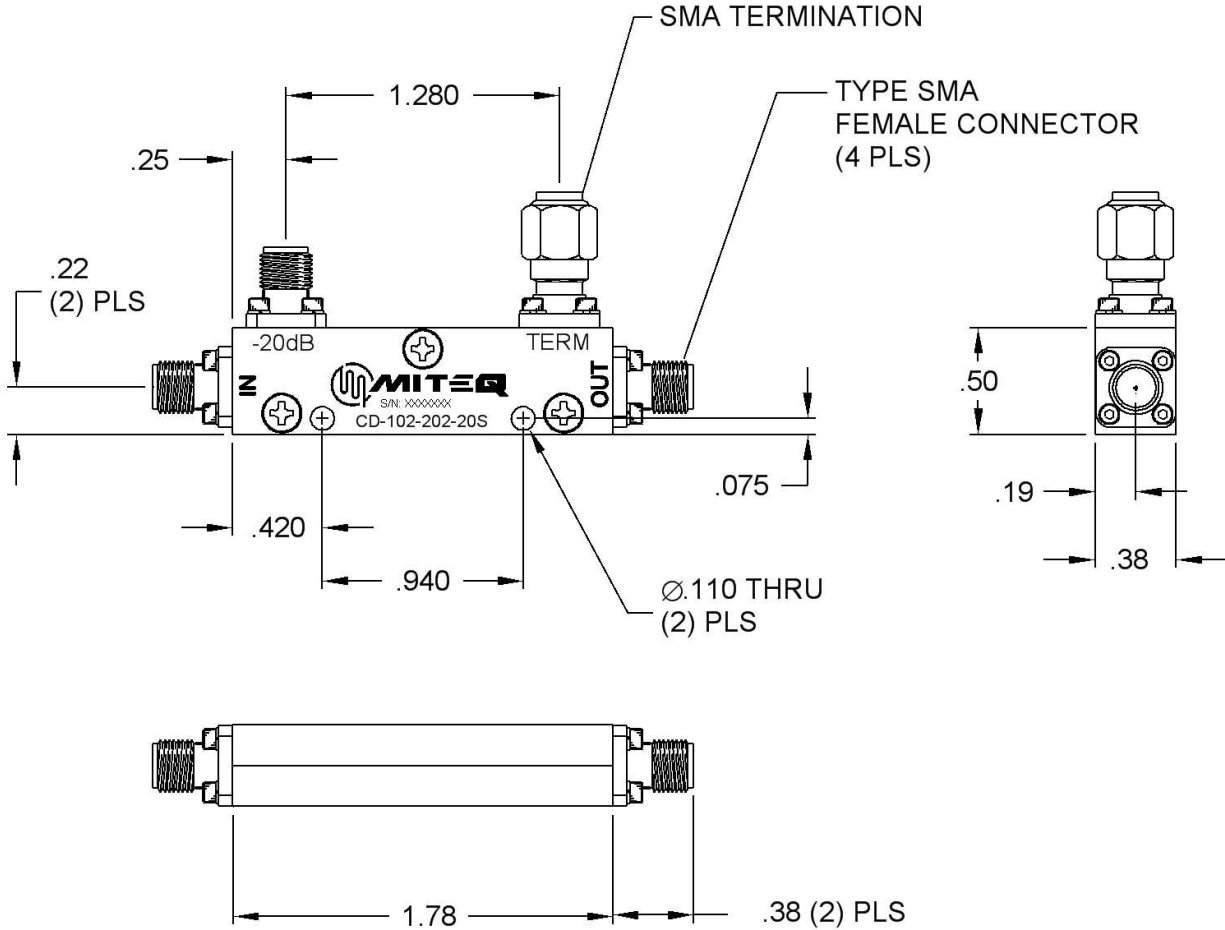
Current Revision

As of 11/12/2010 8:06:13 AM

DWALATA



DASH NO.	APPLICATION		REVISIONS			
	NEXT ASSY	USED ON	LTR	DESCRIPTION	DATE	APPROVED
			C	Incorporated ECN 17961	11/03/10	M. Hannon



NOTES:

1. MATERIAL: ALUM ALLOY 6061-T6.
2. FINISH: TRIVALENT CHROMATE CONVERSION IAW MIL-DTL-5541, TYPE II, CLASS 3.

ALL PAGES ARE OF ORIGINAL ISSUE (A) EXCEPT AS NOTED.	CONTR NO. 12D001		 100 Davids Drive, Hauppauge, New York 11788		
	PREP BY NAME: <i>B. HURST</i>	DATE 10/24/01			
UNLESS OTHERWISE SPECIFIED DIMENSIONS ARE IN INCHES (MM) TOLERANCES ON DECIMAL ANGLES XXX±.01 XXX±.005 ±0°30'	CHKD BY <i>M. Hannon</i>	DATE 11/10/10	OUTLINE DRAWING DIRECTIONAL COUPLER CD-102-202-20S		
	PROJ ENGR <i>W. Davidsson</i>	DATE 11/11/10			
	MFG ENGR		SIZE A	CODE IDENT. NO. 33592	143201
	Q.A.		SCALE	REV. C	