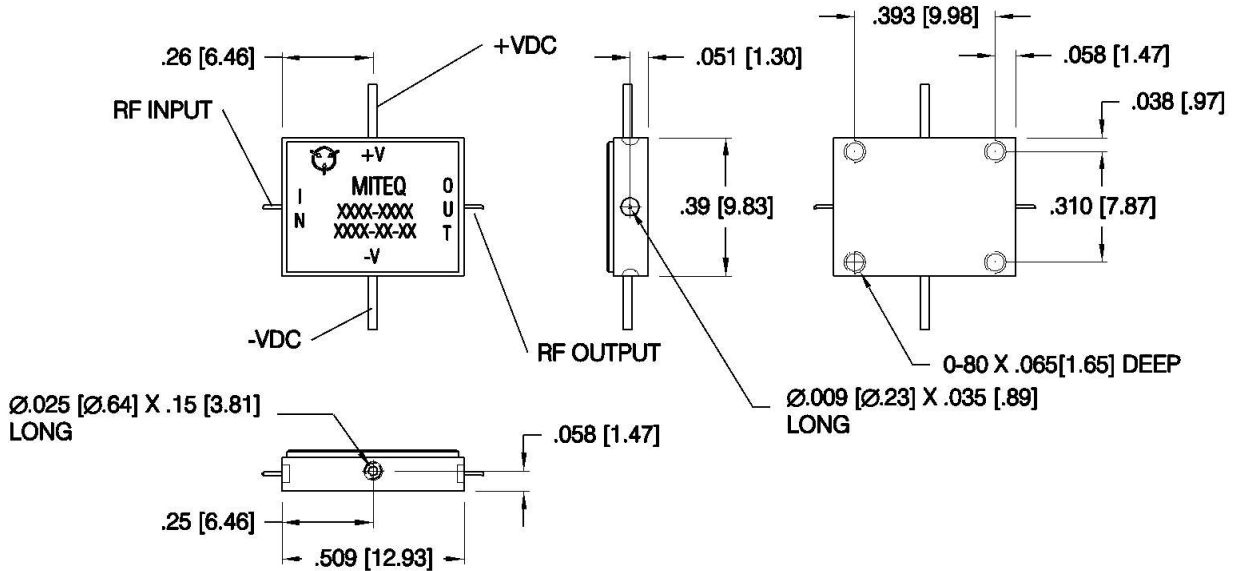


DASH NO.	APPLICATION		REVISIONS			
	NEXT ASSY	USED ON	LTR	DESCRIPTION	DATE	APPROVED
			B	Incorporate ECN 26933	03/04/13	<i>PiScherrer</i>



NOTES

1. DIMENSIONS IN BRACKETS [] ARE IN MM
2. MARKING MAY VARY AS PER CUSTOMER SPECIFICATIONS.
3. REFERENCE OUTLINE 131484 FOR CONNECTORIZED VERSION

UNLESS OTHERWISE SPECIFIED DIMENSIONS ARE IN INCHES TOLERANCES ON	NAME	DATE	 100 Davids Drive, Hauppauge, New York 11788			
	DWN <i>E. Marty</i>	06/08/99				
DECIMAL .X ±0.1 [2.5] DECIMAL .XX ±0.01 [0.25] DECIMAL .XXX ±0.005 [0.13] ANGLES X° ±30°	DFT DGN <i>PiScherrer</i>	03/04/13	JP SERIES AMPLIFIER DUAL DC DROP IN MODULE OUTLINE			
	PROJ ENGR <i>J. Decker</i>	03/04/13				
	MFG ENGR		SIZE	CODE IDENT. NO.		REV
	Q.C.		A	33592	136010	B
	CUST		SCALE	PROJECT	SHEET	OF