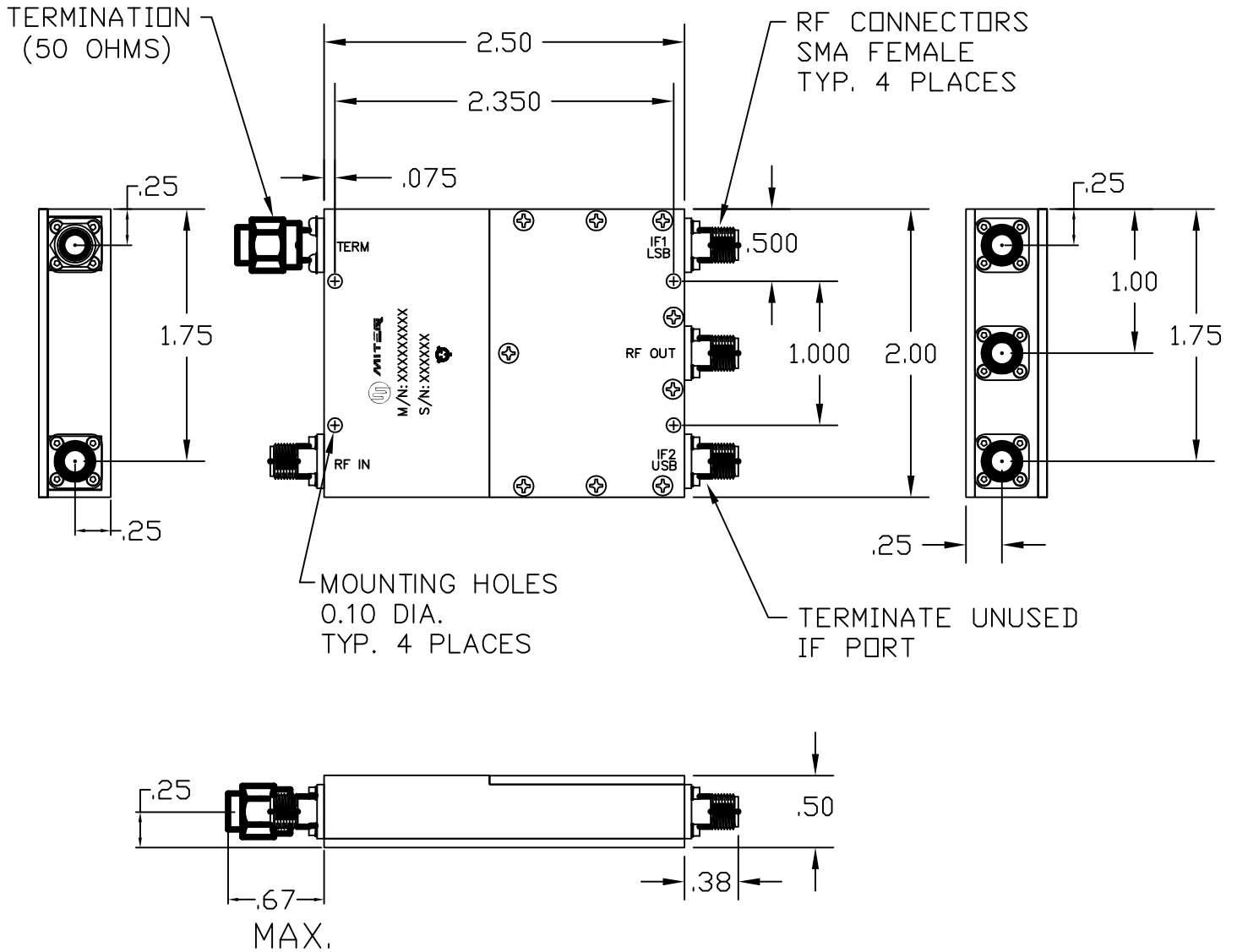



DASH NO.	APPLICATION		REVISIONS			
	NEXT ASSY	USED ON	LTR	DESCRIPTION	DATE	APPROVED
			F	RevPer ECN18832 CH TERM dim	01/31/11	<i>L. Cardinal</i>
			F	.67 MAX. was just .67, Update finish		



NOTES:

1. FINISH: NICKEL PLATE per ASTM B 733 TYPE III

ALL PAGES ARE OF ORIGINAL ISSUE (A) EXCEPT AS NOTED.	CONTR NO.	MQ0136679		 100 Davids Drive, Hauppauge, New York 11788
	ORIGINALLY DRAWN BY	<i>AL</i>	8/10/92	
UNLESS OTHERWISE SPECIFIED DIMENSIONS ARE IN INCHES (MM) TOLERANCES ON DECIMAL ANGLES .XX±.01 XXX±.005 ±0°30'	PREP BY	NAME <i>L. Cardinal</i>	DATE 01/31/11	OUTLINE DRAWING SM with COUPLER C1c PKG
	CHKD BY	<i>L. Cardinal</i>	10/18/11	
	PROJ ENGR	<i>P. Bastedo</i>	10/18/11	
	APPROVAL (PROJ)			
	APPROVAL (GOVT)			SIZE A
				CODE IDENT. NO. 33592
				119624
				SCALE REV. F SHEET 1 OF 1