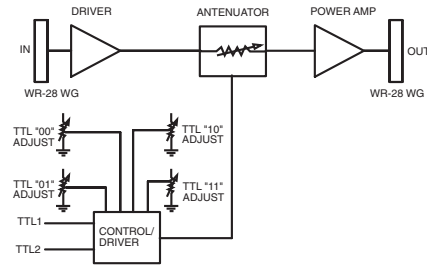


34 TO 36 GHz SWITCHED POWER AMPLIFIER ASSEMBLY

MODEL: SYS3436N01R

FEATURES

- High output level +27 dBm
- Wide adjustment range..... 10 dB
- Field adjustable



The SYS3436N01R is a TTL-controlled switched power amplifier assembly with four preset output power states. All four output states are field adjustable over a 10 dB range. Applications include TWT driver and test instrumentation.

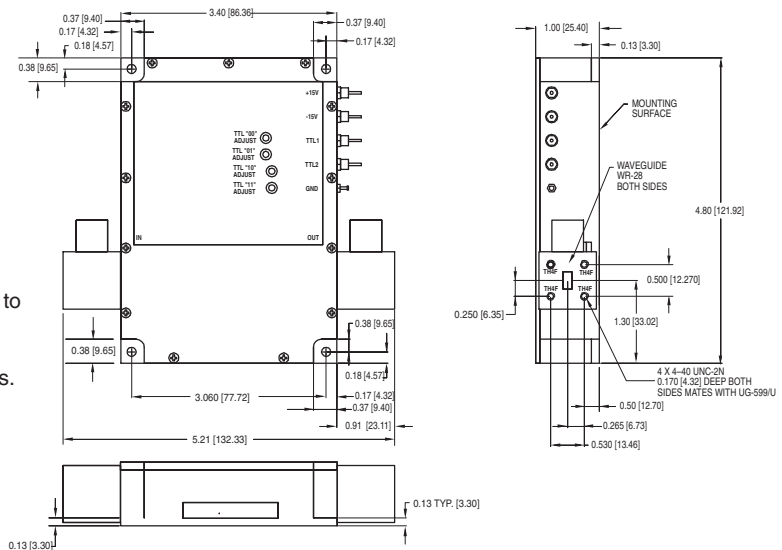
ELECTRICAL SPECIFICATIONS

| INPUT PARAMETERS | CONDITION | UNITS | MIN. | TYP. | MAX. |
|--|------------------|-------|------|------|------|
| Frequency range | | GHz | 34 | | 36 |
| Input level | | dBm | +4 | | +7 |
| Input/output VSWR | 50 ohm reference | Ratio | | 2:1 | |
| V+ bias current | @ +9 to +16 V | A | | 2 | |
| V- bias current | @ -9 to -16 V | mA | | 150 | |
| Output power (factory preset) | Control="00" | dBm | | +17 | |
| | Control="01" | dBm | | +20 | |
| | Control="10" | dBm | | +22 | |
| | Control="11" | dBm | | +27 | |
| Output power adjustment range (all states) | | dB | 10 | | |
| Switching speed | | usec. | | | 20 |

MAXIMUM RATINGS

- Specification temperature +25°C
- Operating temperature -35 to +65°C
- Storage temperature -40 to +95°C

OUTLINE DRAWING



NOTES:

1. Unit's mounting surface shall be attached to a heatsink capable of dissipating the devices power consumption without exceeding the operating temperature limits.
2. Mass 413 grams typical.
3. All dimensions shown in brackets [] are in millimeters.