

# CONSTANT PHASE-LIMITING AMPLIFIERS

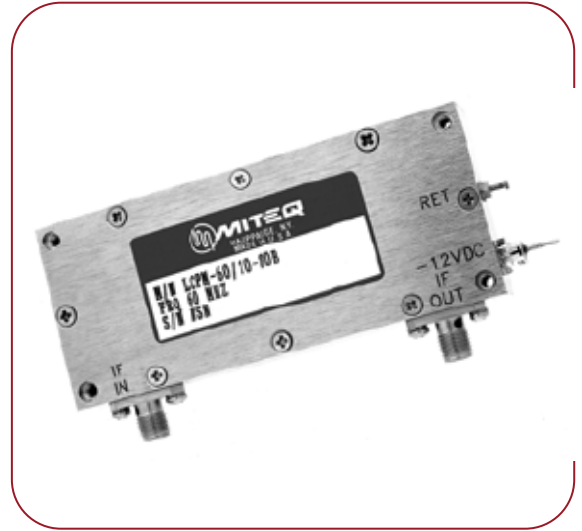
## MODEL: LCPM SERIES

### FEATURES

- Up to 70 dB dynamic range
- $\pm 3^\circ$  phase variation
- $\pm 5$  dB amplitude variation
- Fast recovery

### OPTIONS

- Customized center frequencies
- Custom packaging
- High-reliability screening
- Matched sets



MODEL NUMBER	CENTER FREQUENCY (MHz)	3 dB BANDWIDTH (dBm)	DYNAMIC RANGE (dBm)	OUTPUT POWER VARIATION ( $\pm$ dB)	PHASE VARIATION ( $\pm$ Deg.)
LCPM-3010-70	30	10	-70 to 0	0.5	3
LCPM-6020-70	60	20	-70 to 0	0.5	3
LCPM-7030-70	70	30	-70 to 0	0.5	3
LCPM-12020-70	120	20	-65 to +5	0.5	5
LCPM-14040-70	140	40	-65 to +5	1	5
LCPM-16040-70	160	40	-65 to +5	1	5
LCPM-200100-70	200	100	-65 to +5	1	5
LCPM-400100-60	400	100	-60 to 0	1	5

### ADDITIONAL SPECIFICATIONS

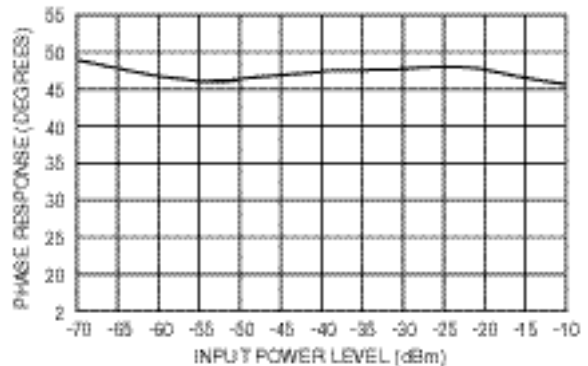
The above models are available in 'A, B and G' housings. Custom housings and electrical specifications are also available. Contact factory for details.  
 Phase variation is measured at center frequency and 25°C. Add  $\pm 3^\circ$  over operating temperature of -40 to +85°C.  
 Output power is 10 dBm nominal at center frequency and 25°C.  
 Additional output power variation of  $\pm 1$  dB will occur over operating temperature of -40 to +85°C.  
 Input/output impedance is 50  $\Omega$ .  
 Input VSWR is < 1.5:1 typical.  
 Output VSWR is < 2.0:1 typical.  
 Noise figure is typically less than 15 dB at center frequency and 25°C.  
 Power: -12 VDC at 150 mA typical.

### ORDER OPTIONS

For -15 VDC, add suffix "C".  
 Matching up to three channels to within  $\pm 3^\circ$  at 25°C is available. Contact factory for details.  
 Typical part number: LCPM-16040-70BC (for 'B' housing at -15 VDC).

### TYPICAL TEST DATA

TYPICAL PHASE RESPONSE VS. INPUT POWER

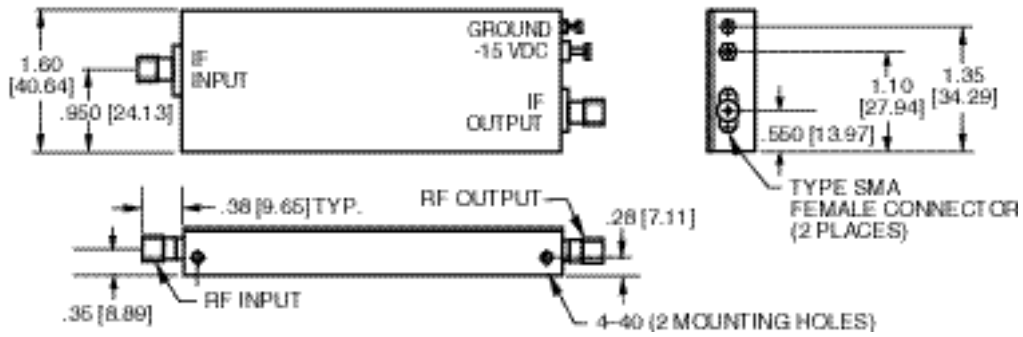


NOTE: FOR MODIFICATION OF OUR STANDARD MODELS, PLEASE CONSULT FACTORY.

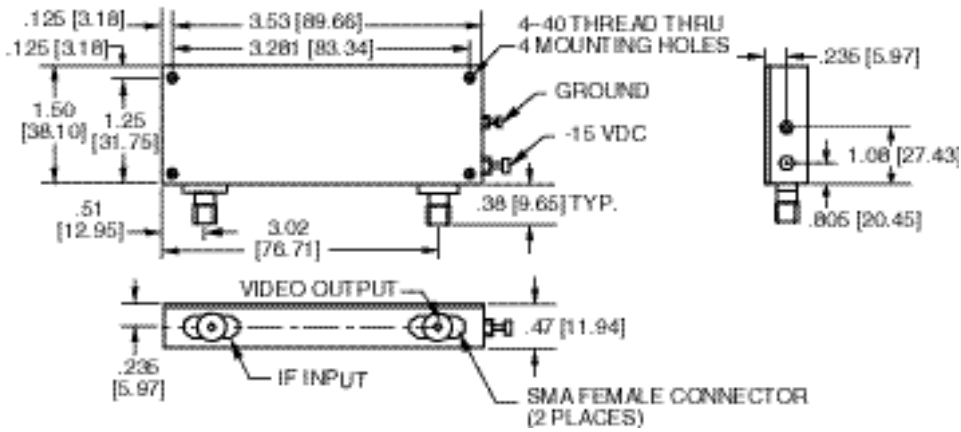


# LCPM SERIES OUTLINE DRAWINGS

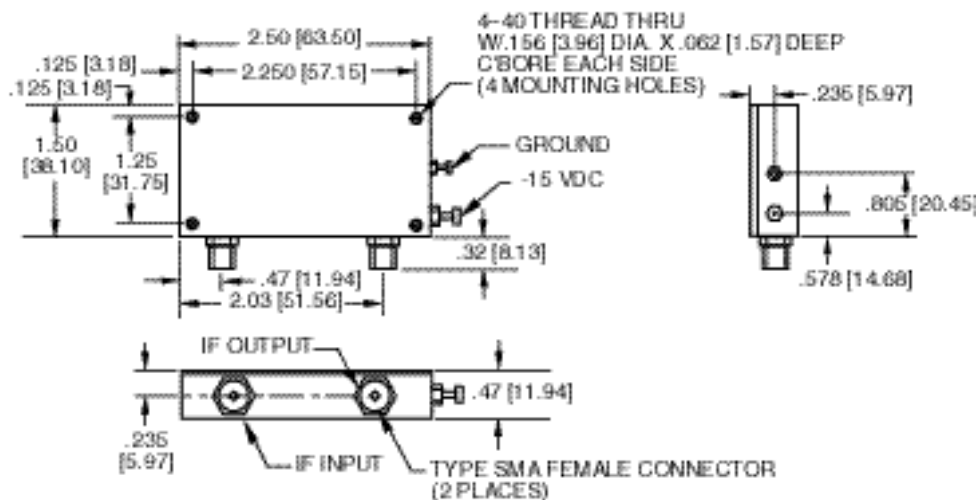
## OUTLINE A



## OUTLINE B



## OUTLINE G



NOTE: DIMENSIONS SHOWN IN BRACKETS [ ] ARE IN MILLIMETERS.

