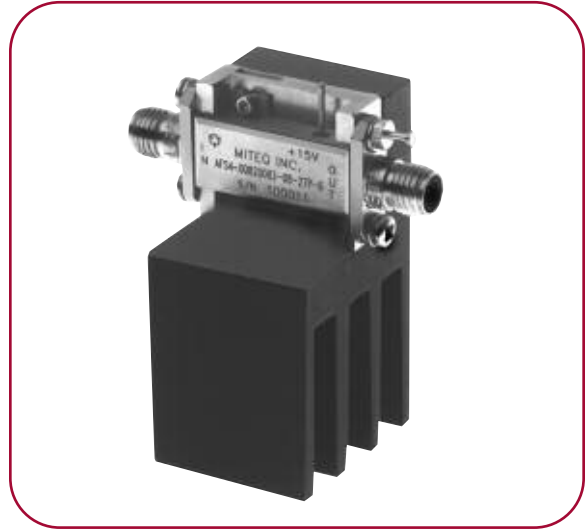


# LOW-NOISE HIGH INTERCEPT AMPLIFIERS

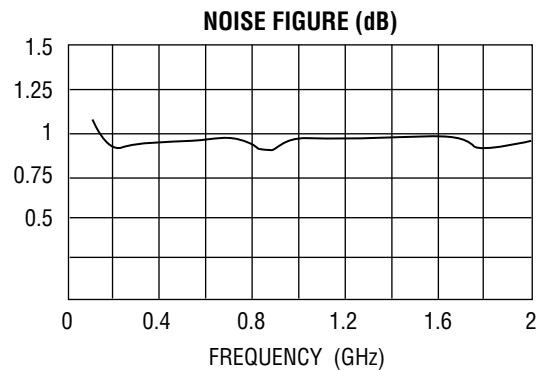
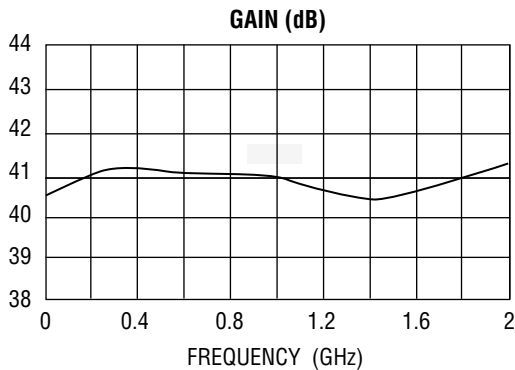
## AFS SERIES

### FEATURES

- Ultra low-noise PHEMT input stages
- Optimized bands from 800 to 930 MHz
- Noise figures from 0.8 dB
- 38 dBm intercept point
- Higher frequency ranges available
- Cellular telephony applications



### AFS4-00100200-27P-CT-6 TYPICAL DATA



MODEL NUMBER	FREQUENCY RANGE (GHz)	GAIN (dB, Min.)	GAIN FLATNESS (±dB, Max.)	NOISE FIGURE (dB, Max.)	VSWR IN/OUT (Max.)	OUTPUT POWER @ 1 dB COMP. (dB, Min.)	OUTPUT IP <sup>3</sup> (dBm, Typ.)	OUTLINE DRAWING
AFS3-00500200-27P-CT-6	0.5–2	33	0.75	2	2:1/2.5:1	27	38	6
AFS4-00500200-27P-CT-6	0.5–2	40	0.75	1	2:1/2.5:1	27	38	6
AFS3-00820086-27P-CT-60.82–0.86		31	0.25	0.8	1.5:1/2:1	27	38	6
AFS3-00880093-27P-CT-60.88–0.93		31	0.25	0.8	2:1/2:1	27	38	6
AFS4-00820086-27P-CT-60.82–0.86		42	0.25	0.8	2:1/2:1	27	38	6
AFS4-00880093-27P-CT-60.88–0.93		42	0.25	0.8	2:1/2:1	27	38	6

NOTES: Contact factory for other frequency bands.  
See page 60 for outline.