

Phase Shifters

DC-26 GHz

Broadband 60° Phase Shifters

- Broadband Coverage
- Low VSWR
- Adjustable via Knob with Lock Nut

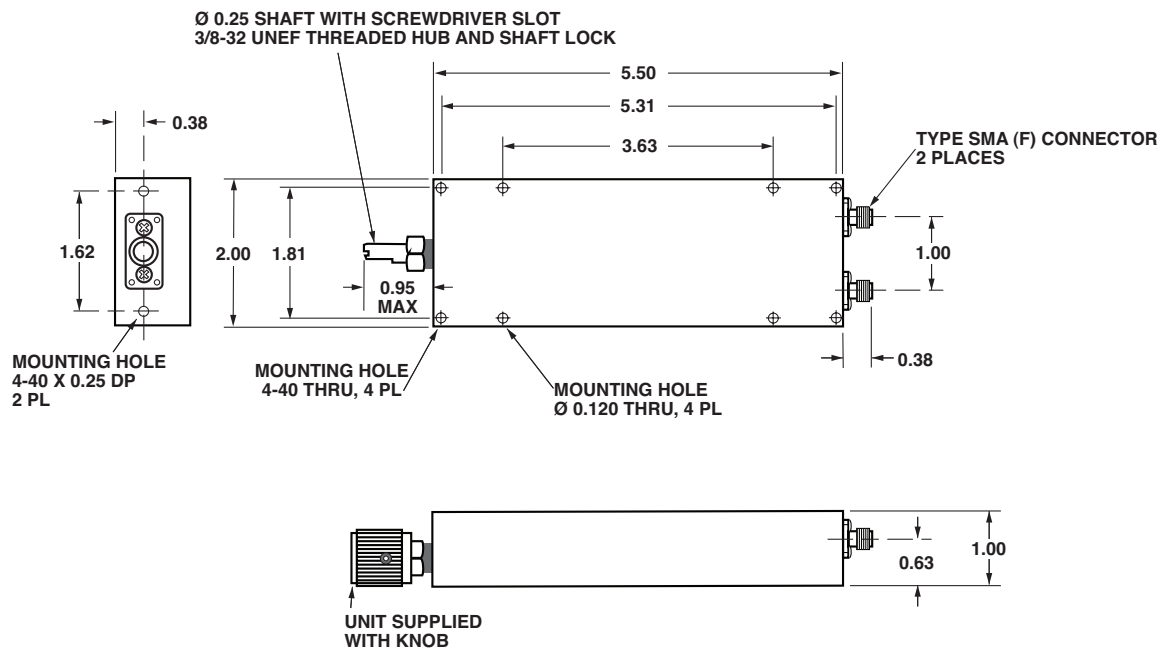


Specifications

SMA (F), DC to 26 GHz

FREQUENCY RANGE (GHz)	MODEL	ADJUSTABLE PHASE SHIFT	POWER		INSERTION LOSS (dB max.)	VSWR (max.)	CONNECTORS	WEIGHT (max.)	
			AVERAGE (W)	PEAK (kW)				oz.	gr.
DC-18.6	4589	0-60° / GHz	100	3	1.0	1.6	SMA (F)	15.4	437
18.0-26.0	4590	0-60° / GHz	100	3	1.5	2.0	SMA (F)	15.4	437

Outline Drawing



Dimensions in inches, unless otherwise specified.